

In & out of focus, precariously

for 2 double basses

Heather Frasch
2021

Performance notes - Bass Duo

Timing: This score uses spatial notation with 30 seconds or 1 minute time frames. The placement within these time frames doesn't need to be exact but should be approximately distributed.

Basses sound one octave lower than written.

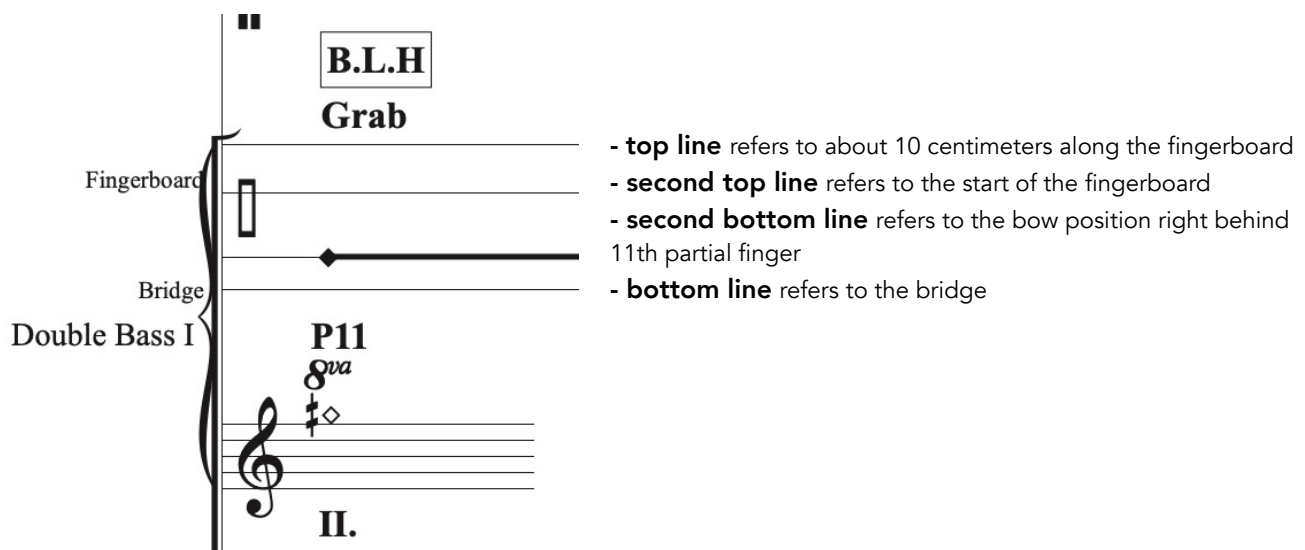
Harmonics are notated with a diamond notehead at the finger position and sound an octave lower than written. The sounding pitch is written in parenthesis when it differs from the fingered note.

The **Strings** that should be used are notated at the bottom of the staff throughout the piece.

B.L.H refers to bowing 'behind' the left hand. Depending on the perspective this means to bow in the non-normal position or on the other side of where the finger is located. The **11th Partial** should be **fingered** using **harmonic pressure** even if it doesn't sound. Bow pressure should be light and a moderately slow speed should be used.

This technique is written in combination with the following position clef below:

In this clef, the **black diamond** notehead refers to the finger position and is added for clarity. The bow movement should approximately follow the movement of the lines.



Grab refers to adding a bit of pressure to sound the harmonic. **No grab** means to lighten the bow pressure to avoid intentionally sounding the harmonic even if it sounds.

Multiphonics: On the given string, finger between the 6th and 7th partial so that both are sounding. Bow speed should be moderate with light pressure and just above the fingerboard.

Norm. = average bow pressure, speed and positions

Score
Part I

in & out of focus, precariously

for 2 double basses

heather frasch

0'30

Bass 1

Calmly

p

I / 8

I / 10

I / 9

Bass 2

Calmly

p

I / 9

I / 8

I / 10



1'00

Bass 1

I / 10

I / 12

Bass 2

I / 11

1'30

Bass 1

Bass 2

I / 10 I / 8 I / 9 I / 10 I / 11

I / 12 I / 10 I / 12 I / 10



2'00

D.B. I

D.B. II

I / 11 I / 10 I / 8 I / 9 I / 11 I / 10 I / 8 I / 9

I / 12 I / 10 I / 12 I / 10

2'30

D.B. I

D.B. II

II / 10 II / 11 II / 9 II / 10

7 I / 8 I / 9

Detailed description: This system contains two musical staves. The top staff, labeled 'D.B. I', is in treble clef with a key signature of one sharp (F#). It features a melodic line with diamond-shaped accents. Below the staff, the Roman numerals 'II / 10', 'II / 11', 'II / 9', and 'II / 10' are aligned with the notes. The bottom staff, labeled 'D.B. II', is in treble clef and starts with a '7' above the first note. It features a lower melodic line with diamond-shaped accents. Below this staff, the Roman numerals 'I / 8' and 'I / 9' are aligned with the notes. A dashed vertical line is on the right side of the system.



3'00

D.B. I

D.B. II

II / 11

8 I / 8 I / 9 I / 7

Detailed description: This system contains two musical staves. The top staff, labeled 'D.B. I', is in treble clef with a key signature of one sharp (F#). It features a melodic line with diamond-shaped accents. Below the staff, the Roman numeral 'II / 11' is aligned with the notes. The bottom staff, labeled 'D.B. II', is in treble clef and starts with an '8' above the first note. It features a lower melodic line with diamond-shaped accents. Below this staff, the Roman numerals 'I / 8', 'I / 9', and 'I / 7' are aligned with the notes. A dashed vertical line is on the right side of the system.

3'30

D.B. I

II / 9 II / 10 II / 9 II / 8 II / 9 II / 11

D.B. II

I / 8 I / 9 I / 7 I / 9 I / 8

4'00

D.B. I

II / 10 II / 9 II / 8 II / 7 II / 8

D.B. II

II / 11 II / 8 II / 9 II / 10 II / 11 II / 9 II / 10

4'30

D.B. I

II / 9 II / 7 II / 8 II / 10 II / 8 II / 9

D.B. II

13 II / 9 II / 7 II / 9 II / 7

5'00

D.B. I

II / 8 II / 10 II / 8 II / 9 II / 7 II / 8

D.B. II

16 II / 8 II / 9 II / 10 II / 9 II / 8

Transposed Score

Part 2

in & out of focus, precariously

for 2 double basses

heather frasch

0'00

1'00

Quiet and delicate

Multi. Try to maintain a **stable**
balance between the two pitches

Double Bass I

II. / 7 & 6

p

Quiet and delicate

Double Bass II

II / 8

II / 8

pp

II / 9

II / 9



2

2'00

DB I

cont'd

II.

-----> Allow for occasional & slight
wobbly instability between
the two pitches

pp

II. / 7 & 8

DB II

II / 7

II / 7

II / 8

in & out of focus, precariously

2

3

3'00

DB I

cont'd

II. / 7 & 8
p

Continue a sense of
quiet and delicate

Multi. Allow for a **slight unstable**
balance between the two pitches
- a **wobbly** quality

pp

DB II

I. / 6 & 5
p

pp

4

4'00

DB I

norm.

II / 8

I. / 7

DB II

cont'd

I. / 7 & 6

in & out of focus, precariously

3
5'00

5

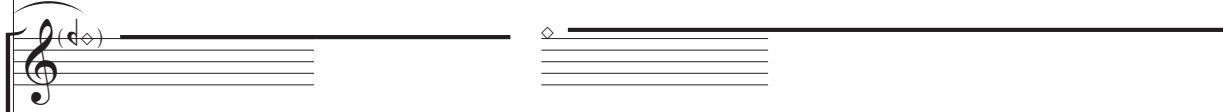
Unstable Sounds
Slowly search for complex sounds.
Linger on 12th Partial when possible

Multi.

I. / 7 & 6 & 5

p

DB I



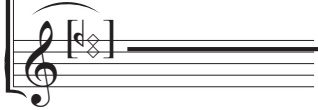
I / 8

Begin to *destabilize*
cont'd

-----> Slowly search for complex sounds.
Linger on 12th Partial when possible



DB II



p

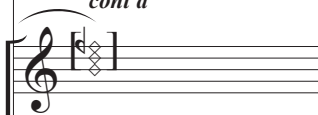


6

6'00

-----> Change position to side of string
to allow more complex unstable partials
to be heard. Maintain a **Peaceful quality**

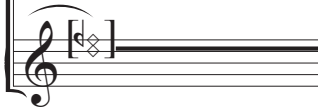
DB I



cont'd

Change position to side of string
to allow more complex unstable partials
to be heard. Maintain a **Peaceful quality**

DB II



cont'd

in & out of focus, precariously

4
7

7'00

cont'd

norm.

DB I

I. / 9

I. / 8

ppp

cont'd

norm.

DB II

II / 11

II / 10

II / 9

pp

ppp

8

8

8'00

DB I

Multi.

Allow sounds to *wobble*
lightly.
Occasional & *slow* shifts.

I. / 9

II. / 7 & 6

pp

p

DB II

II / 10

II / 11

II / 9

II / 10

II / 9

pp

in & out of focus, precariously

5
9'00

9

DB I

9 *cont'd*

I. / 6 & 5

Multi. Allow sounds to *lightly stutter*.
Occasional & *slow* shifts.

DB II

II. / 7 & 6

p

II. / 7 & 8

10

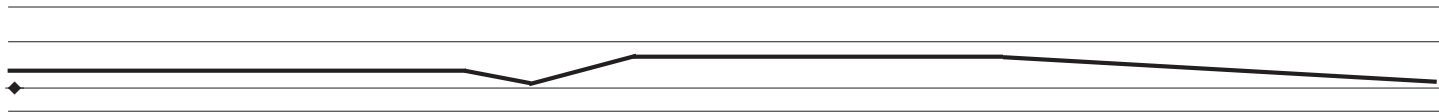
10'00

DB I

10 *cont'd*

Bring out **10th and 11th** Partial
Slow changes
Dedicate and fragile

B.L.H



III. / 11
pp

p

DB II

cont'd

II. / 7 & 8

pp

p

in & out of focus, precariously

6
11

The diagram illustrates the performance setup for two double basses, DB I and DB II. Each instrument's components are labeled: Fingerboard, DB I, Bridge, and DB II. Performance instructions are provided for both instruments, including 'Bring out low noise', 'Not constant. Erratic presence', and 'Maintain delicate quality'. A specific instruction for DB II is 'Emphasize 10th and 11th Partials' and 'Delicate erratic activity', with a boxed note 'B.L.H'. Musical notations include a treble clef and a diamond symbol on a staff, with the text 'III. / 11' below it. A dynamic marking 'mp' is also present. A time signature '6/11' is located at the top left, and a time stamp '11'00' is in the top right corner.

Bring out low noise
Not constant. **Erratic** presence
Maintain **delicate** quality

mp

Emphasize **10th and 11th** Partials
Delicate erratic activity
B.L.H

Bring out low noise
Not constant. **Erratic** presence
Maintain **delicate** quality

mp

III. / 11

12

DB I

DB II

----->
Increase low noise
Less Calm but hold back

norm. *ad lib.* finger bend
to accel/ deaccel beatings

-----> increase erratic quality

mf

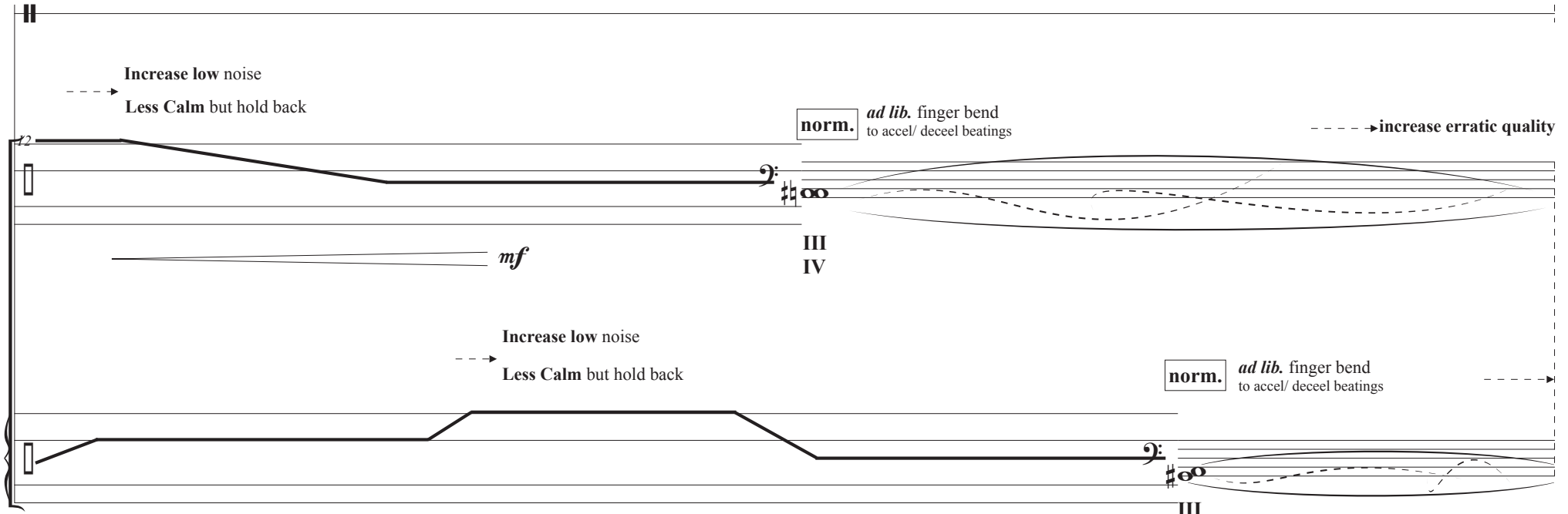
III
IV

----->
Increase low noise
Less Calm but hold back

norm. *ad lib.* finger bend
to accel/ deaccel beatings

mf

III
IV



in & out of focus, precariously

13'00

8
13

DB I

Gritty and unstable
B.L.H Grab: emphasize upper partials

Musical staff for DB I. It features a large dynamic swell line that starts at a moderate level, dips slightly, and then rises to a peak before settling. A diamond marker is placed on the staff at the beginning of the swell.

Musical staff with treble clef and notes IV. / 11.

mf *ff* *mf*

f

increase erratic quality

DB II

Rumbly
ad lib. slowly bend finger on III to raise/lower pitch maximum 1/2 tone

Musical staff for DB II. It contains several notes and a dynamic swell line that starts at a high level and gradually decreases.

f

III
IV

ad lib. dynamic swells

Dynamic swell diagram: *f* *ff* *mf* with an arrow pointing to the right.

in & out of focus, precariously

14

DB I

norm.

ad lib. finger bend on IV
to *accel.* / *deccel.* beatings

f

ff

Gritty and unstable

B.L.H Grab: emphasize
upper partials

DB II

IV. / 11
f

in & out of focus, precariously

15'00

10
15

Fingerboard
DB I
Bridge

Slow and erratic
downward gliss.

irregular transition

mp

n

norm.

ad lib. finger bend on IV
to *accel.* / *deccel.* beatings

Slow and erratic
downward gliss.

DB II

irregular transition

mp

n

III
IV
ff

16

16'00

Sustain pedal pitch
gently *ad lib* order of bottom pitches.

Pause & linger during nice moments

DB I

II / 8
III / 10 9 8
pp

Sustain pedal pitch
gently *ad lib* order of top pitches.

Pause & linger during nice moments

DB II

II / 8 9 10
III / 9
pp

in & out of focus, precariously

11
17'00

17

DB I

sim.

II / 7
III / 7 8 9

cont'd ----->

DB II

Sustain top pitch
gently rotate & *ad lib*
order of bottom pitches

II / 7
III / 8 9 10



18

18'00

DB I

Sustain bottom pitch
gently *ad lib* top pitches

II / 8 9 10
III / 9

sim.

II / 8 9 11
III / 9

DB II

12
19

DB I

19

B.L.H Maintain a *Delicate & Fragile* sound world til the end

Slowly & slightly move bow position
Highlight **11th and 10th** Partials

II / 11

p

B.L.H Maintain a *Delicate & Fragile* sound world til the end

Empahsize *11th* Partial

-----> *Slowly & slightly* move bow position
Highlight **11th and 10th** Partials

DB II

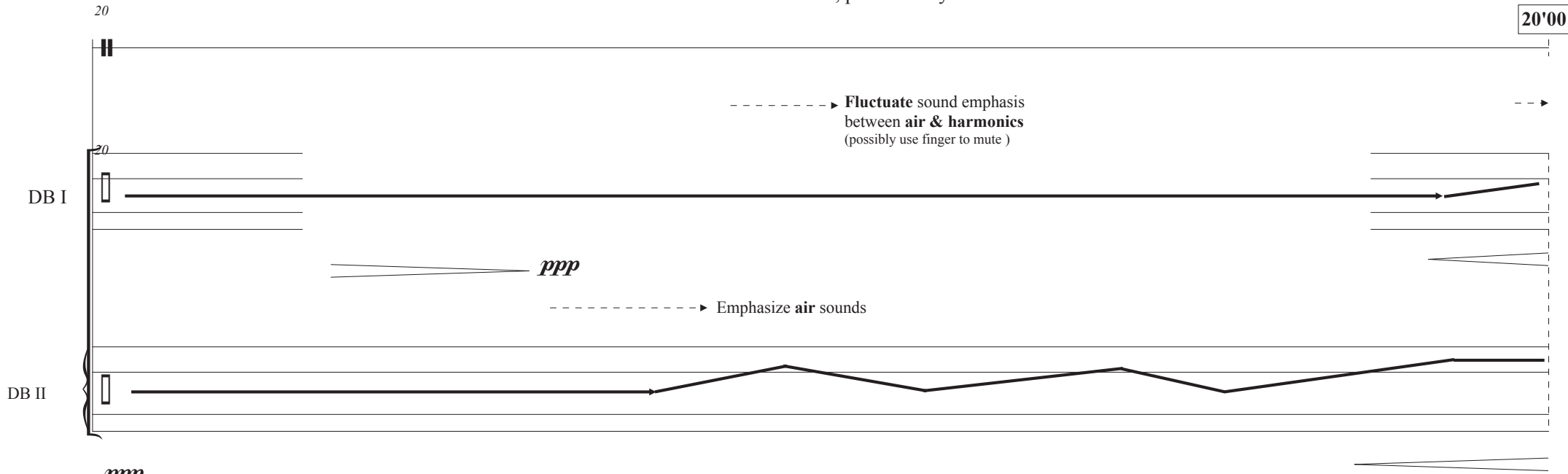
II / 11

p

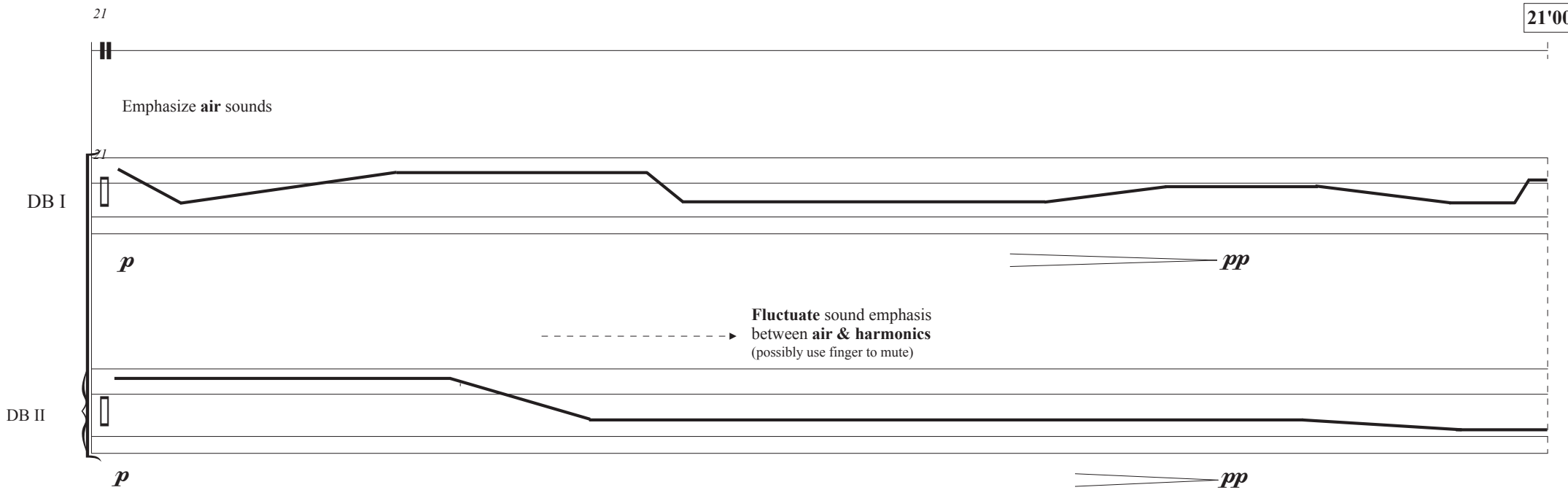


in & out of focus, precariously

13
20'00



21'00



in & out of focus, precariously

22'00

14
22

Fluctuate sound emphasis
between **air & harmonics**
(possibly use finger to mute)

--> **Emphasize 11th partial**

Let the sound disappear
--> *Air*

DB I

Let the sound disappear

---> **Emphasize 11th partial**

---> *Air*

DB II

n

